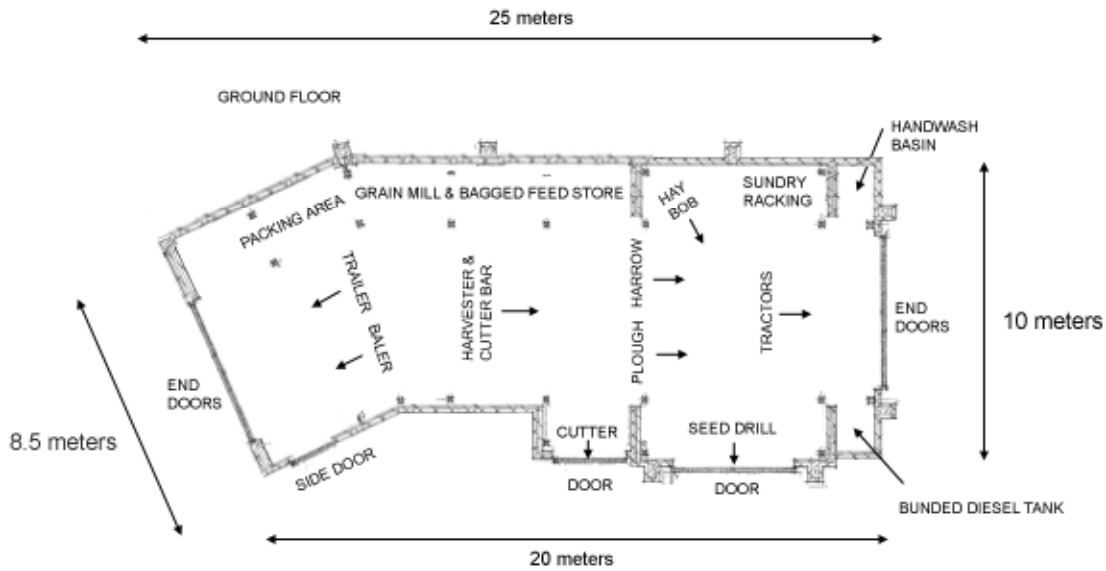


# Proposed New Barn Floor Plans

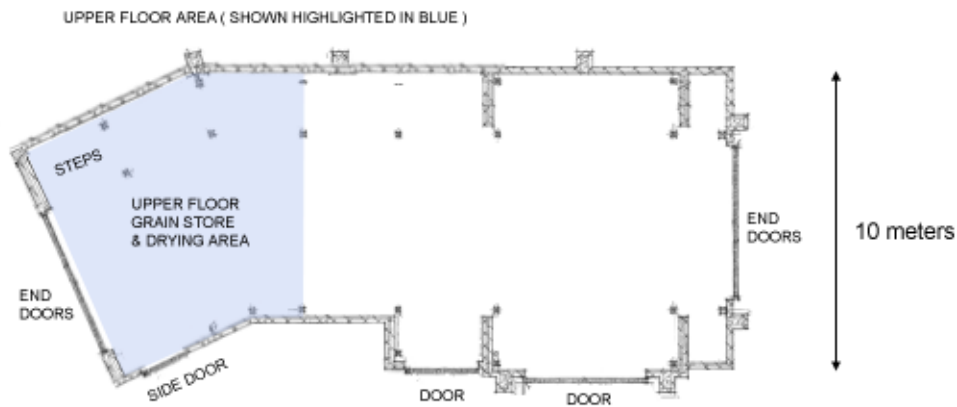


GROUND FLOOR AREA  
179 SQM

UPPER FLOOR GRAIN STORE  
& DRYING AREA  
73.186 SQM

TOTAL BARN AREA  
252.186 SQM

NOTES :  
ARROWS NEXT TO EQUIPMENT  
ITEMS REPRESENT DIRECTION  
OF TRAVEL THROUGH BARN.



Swithland Agricultural Holdings  
New Barn Floor Plans  
28th September 2009