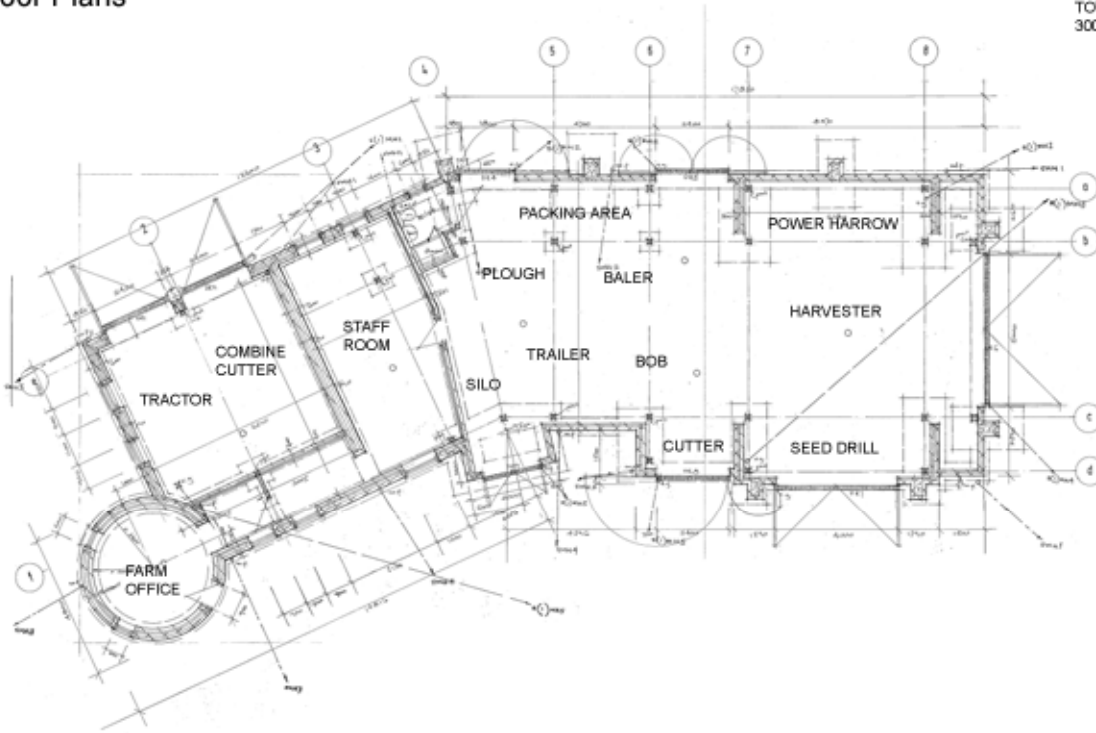
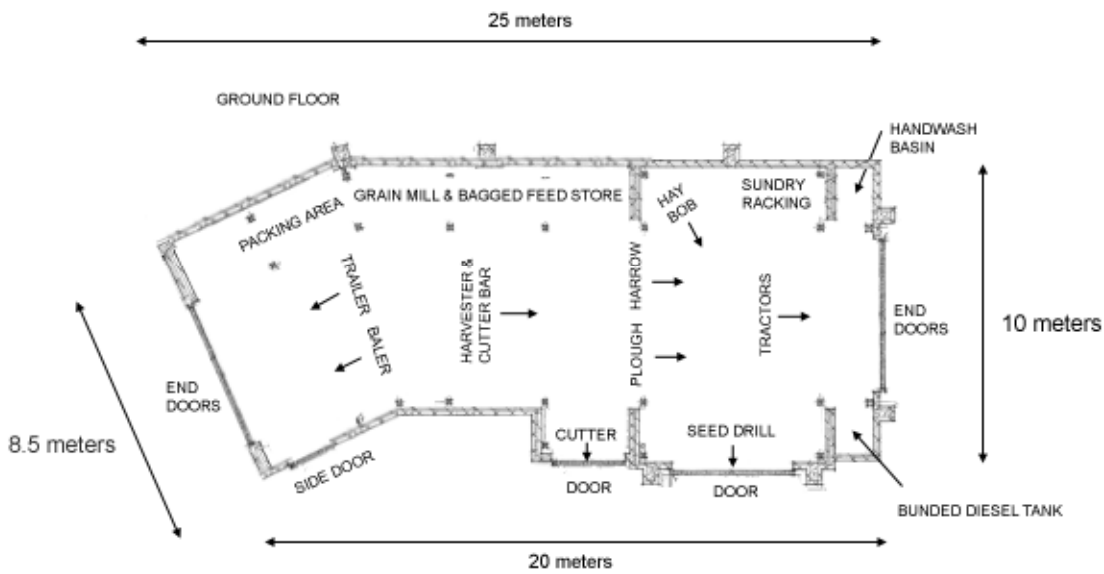


Existing Floor Plans

EXISTING
TOTAL BARN AREA
300 SQM ON ONE LEVEL ONLY



Proposed New Floor Plans



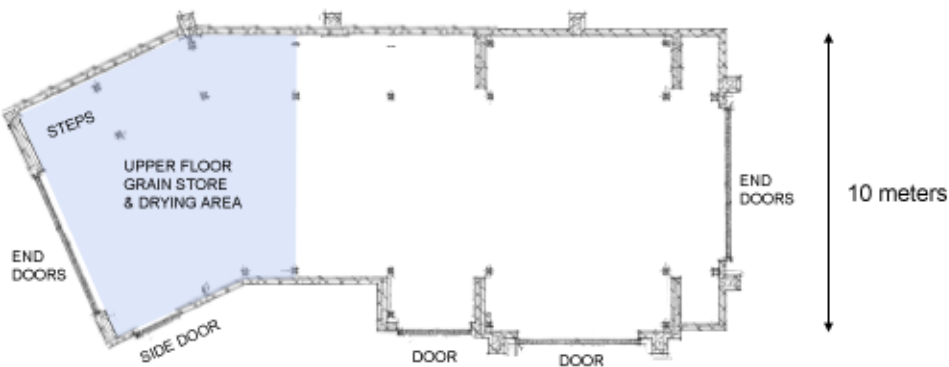
GROUND FLOOR AREA
179 SQM

UPPER FLOOR GRAIN STORE
& DRYING AREA
73.186 SQM

TOTAL BARN AREA
252.186 SQM

NOTES :
ARROWS NEXT TO EQUIPMENT
ITEMS REPRESENT DIRECTION
OF TRAVEL THROUGH BARN.

UPPER FLOOR AREA (SHOWN HIGHLIGHTED IN BLUE)



Swithland Agricultural Holdings
Phoenix Barn
Modifications to Floor Plans
10th September 2009